



DINING TABLE KATA



The table model Kata – suitable for both indoor and outdoor use – features a black powder-coated steel frame with a classic straight toe foot, which can be combined with various tabletops. It is available in dining table height, with FLAT technology or adjustable floor gliders, and can additionally be equipped with a tilting mechanism for space-saving storage. The hydraulically mounted floor gliders of the FLAT system automatically adapt perfectly to uneven floors, meaning you can say goodbye to wobbly tables for good! The patented system immediately responds to the surface when the table is placed, ensuring a stable stand.

- Highly weather-resistant and easy to maintain due to powder coating
- Robust and stable thanks to the steel frame
- Wobble-free thanks to flexible floor leveling systems

€137.00

DINING TABLE KATA

Your chosen variant

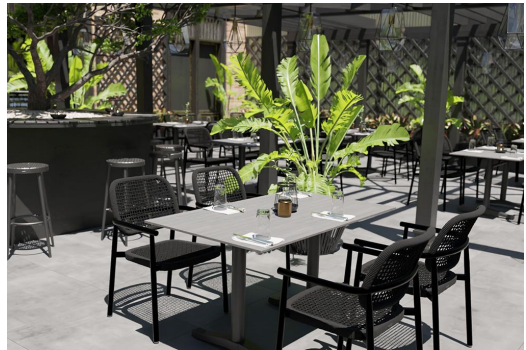
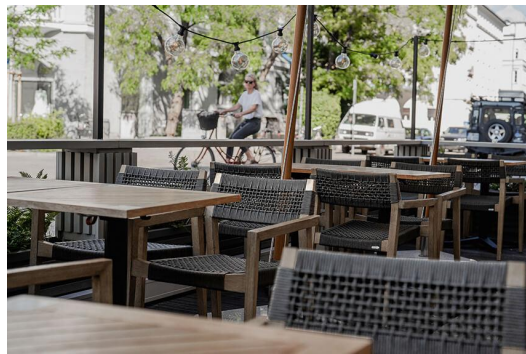
Product details

Product Code:	101C1L
Model name:	Kata
Product type:	dining table
Frame material:	steel
Frame colour:	black powder-coated
Foot type:	4-foot
Floor glider:	flat technology
Assembly state:	not assembled
Edge thickness:	0 mm
Table top thickness:	0 mm
Fixing top:	standard
Table base size:	central single column

Technical specifications

Product Code:	101C1L
Model name:	Kata
Product type:	dining table
Application area:	outdoors
Height:	73 cm
Width:	56 cm
Weight:	16.8 kg

DINING TABLE KATA



DINING TABLE KATA